

Our doors know...



...how to deal with impact!

Grandmaster brings to you a diverse range of security products for the Banking, Non Banking, Hospitality, Retail, Gems & Jewellery segments, Gas Stations as also Corporate & Public Sector undertakings. Presented in this catalogue is our range of **GrandAuro** Strong Room Doors that are engineered as per the latest technology and standards providing you an effective security solution thereby allowing you to breathe easy.

Grandmaster Innovations Pvt. Ltd., is a high quality security solutions company promoted by professionals who have decades of combined experience in entrepreneurship and marketing and were responsible for founding and successfully establishing the most sought after refrigeration brand 'Celfrost' in the Indian hospitality industry.

The GrandAuro range of physical security products are designed to the most stringent specifications and are manufactured by our group company Auombica Engg. Co. Pvt. Ltd. under watchful quality control measures. GrandAuro Strong Room Doors of different Classes with varying Burglary resistance are successfully tested for Fire Endurance, Fire Hose Streaming Evaluation and Burglary Resistant Evaluation and are approved and listed by BIS as per IS:11188-2014 thereby ensuring reliability and a reason for you to breathe easy.

Approved and listed by BIS, GrandAuro Strong Room Doors are recommended to protect the contents of vault (strong rooms) from burglarious attack and also against damage to valuables from fire.

These doors may also be used by other organizations like financial institutions, commercial, industrial, defence and mercantile organizations.

## Strong Room Door



## Design & Construction

GrandAuro has developed new design with a double layer door construction that offers superior barrier against attacks on the door and also enhances its fire protection capability.

### Main Door (Outside) & Ventilating Grill Gate (Inside)

The main door consists of outer and inner mild steel plates, strongly rimmed and welded to form a single structure and tightly enclosing a solid slab of high speed drill-resisting and oxyacetylene torch-resisting material.

A well designed Grill Gate is constructed with heavy round bars at staggered pitch and secured with GrandAuro high precision eight lever unpickable lock operating on both sides. The grill gate is hinged to the door-frame such that it can be opened inside, either from left to right or from right to left as required by the user.



### Hinges

The hinges of the door are aligned horizontally and vertically enabling a smooth and easy operation. The hinges are able to adjust the Door alignment to accurate fitness with the frame.

### Bolt Work Mechanism

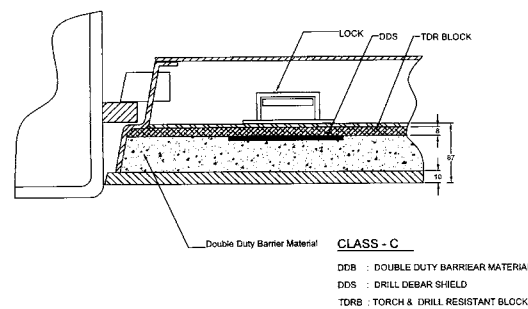
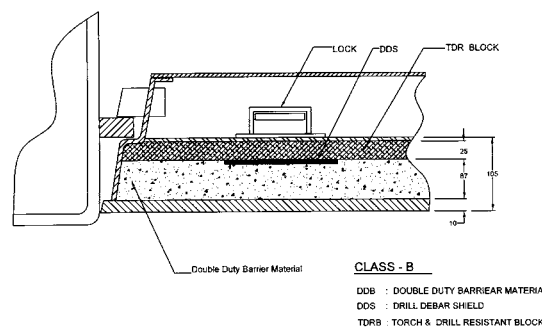
The door is provided with 12 shooting bolts (each of 38mm diameter) six in front and six at the rear which slides behind the tough "Box-Jamb" rebate. These bolts can be activated simultaneously by the movement of the handle.



### Door Frame

Prime and tested quality 10mm thick MS Plate is used for the fabrication of one piece bent angle door frame. The door frame is reinforced along the height and width for strength and rigidity. A "Box-Rebate" is plug welded to the frame to provide strong support for the shooting bolts. These door frames are far stronger than angular frames.

GrandAuro CLASS-B strong room doors are recommended for high risk area such as large vaults, B Class currency chests, safe deposit locker installations of financial institutions and banks. Class-C doors are recommended for small and medium size safe deposit lockers, and place where sizable volume of cash diamonds, gold and other valuables are stored.



### Locking

The Door is provided with two high precision GrandAuro 10 lever dual control locks with stainless steel keys in duplicate. For additional safety, GrandAuro Doors can be provided with a 3 Wheel Combination Lock, an Electronic Lock or a Time Lock at extra cost as per the customer's choice.

### Automatic Self Locking Device

Strong Room Door is further protected by an automatic self-locking device that comes into operation and dead locks the doors, if the lock is dislodged by explosive, sledge hammer or other attacks.

### Grill Gate

A well designed Grill Gate is constructed with heavy round bars at staggered pitch and secured with GrandAuro high precision eight lever unpickable lock operating on both sides provided with Stainless Steel keys in duplicate.

### Emergency Doors

GrandAuro also offers Emergency Doors to facilitate emergency entry into the Strong Rooms. All other specifications are similar to the main doors Class-B and C and dimensions are given in the table.

### Finish

All steel parts are given a thorough anti-corrosion chemical treatment against rust formation followed by coats of anti-rust primer and two coats of high quality epoxy paint for a smooth, scratch-free, long lasting and elegant finish.

## Technical Specifications

SPECIFICATION		CLASS-B		CLASS-C	
		MAIN	EMERGENCY	MAIN	EMERGENCY
Recommended for wall thickness	WT	380-460	380-460	305-380	305-380
Overall size (HxW)		2235 x 1300	1095 x 1165	2175 x 1225	995 x 1065
Clear opening	A	2000 x 910	740 x 757	1985 x 910	740 x 757
Door swing	B	1080	925	1080	925
Grill gate swing	C	990	830	990	830
Projection of door at 90°	D	1080	925	1080	925
Projection of door when opened at 180°	E	305	305	282	282
Overall width of door & frame for max. clear opening	F	1900	1500	1850	1415
Overall width of door & frame when fully opened	G	2250	1915	2200	1860
Overall thickness	H	200	200	175	175
Overall thickness of door frame including grill gate	I	300	300	270	270
Weight without packing	Kg.	1150	475	900	370
Weight with packing (approx)	Kg.	1280	580	1040	400
Shipping details	H	2355	1215	2285	1185
	W	1420	1285	1345	1130
	D	540	540	510	575



Our policy is one of continuous development and improvement. We, therefore reserve the right to alter any part of the dimensions and specifications without prior notice or obligation.

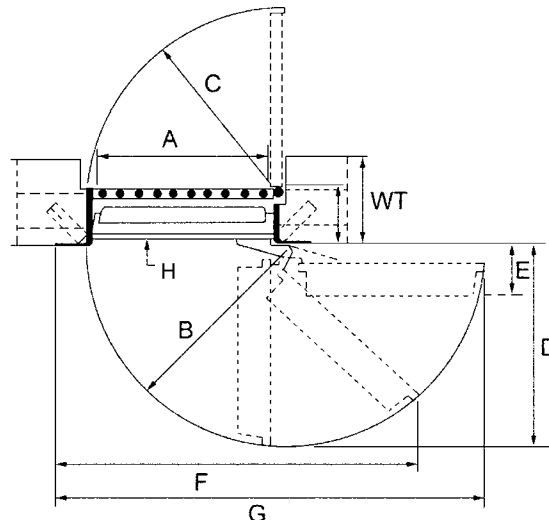
Standard **GrandAuro** Doors are right hung. However, we can supply non-standard doors as per customers specification and requirement. We provide accessories such as tang bars, Emergency door, combination locks etc. at extra cost.

Tolerance Weight : ± 3% Dimensions : ± 1%

### BIS Standards

Class	Classification Code	
C	TRTL-15	FR-30
B	TRTL-30	FR-30
A	TRTL-60	FR-30
AA	TRTL-120	FR-30

**Warning:** When Strong Room Doors and other heavy items are to be installed on the first floor or above, the load carrying capacity of the floor must be ascertained from the structural engineer / architect concerned. The strong room door must be installed directly above the beams only. All dimensions are approximate and in mm.



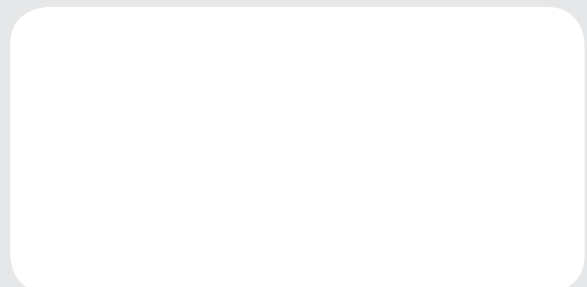
IS : 11188  
  
 CM/L-2863066

## GRANDMASTER™

GRANDMASTER INNOVATIONS PVT. LTD.  
 D-38, Kailas Complex, Hiranandani Vikhroli Link Road  
 Vikhroli (West), Mumbai - 400 079, India  
 Tel : +91 22 25175478 corp@grandmaster.co

Mumbai	: 8879996149	Gujarat	: 9898743577
Karnataka , A.P. & Telangana	: 9880108555	Maharashtra	: 9372626770
Tamil Nadu & Kerala	: 8056009667	U.P. & Utrakhand	: 9984891999
Bengal & Eastern Region	: 9930043106	Rajasthan	: 9898743577
Delhi NCR	: 9953003188	M.P. & Chattisgarh	: 9324569975
Punjab & Haryana	: 9803003335	Goa	: 9820217309

Authorised Dealer



[www.grandmaster.co](http://www.grandmaster.co)